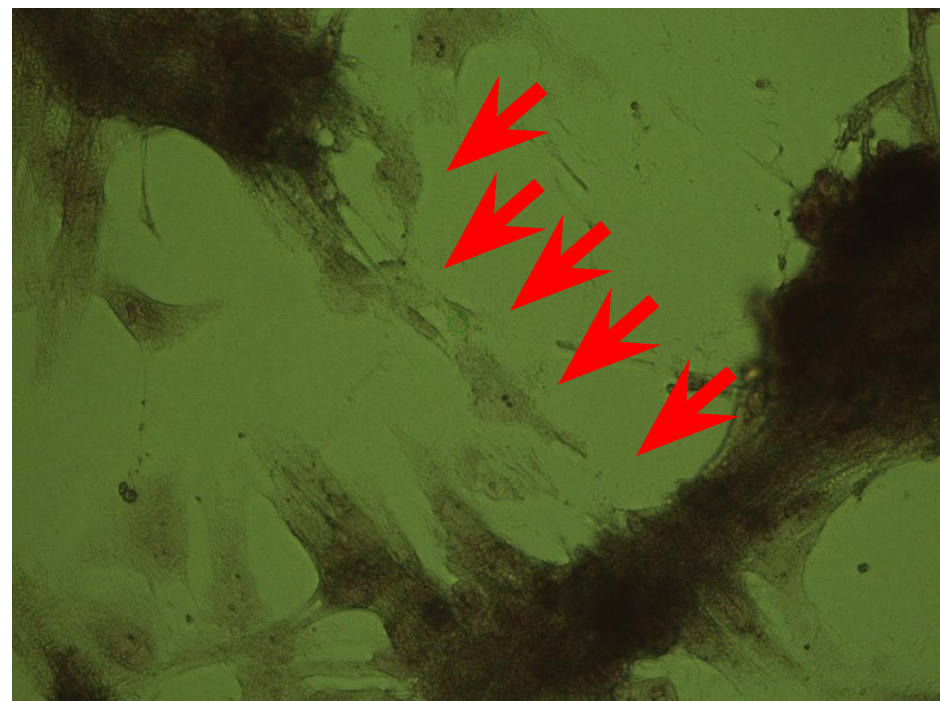
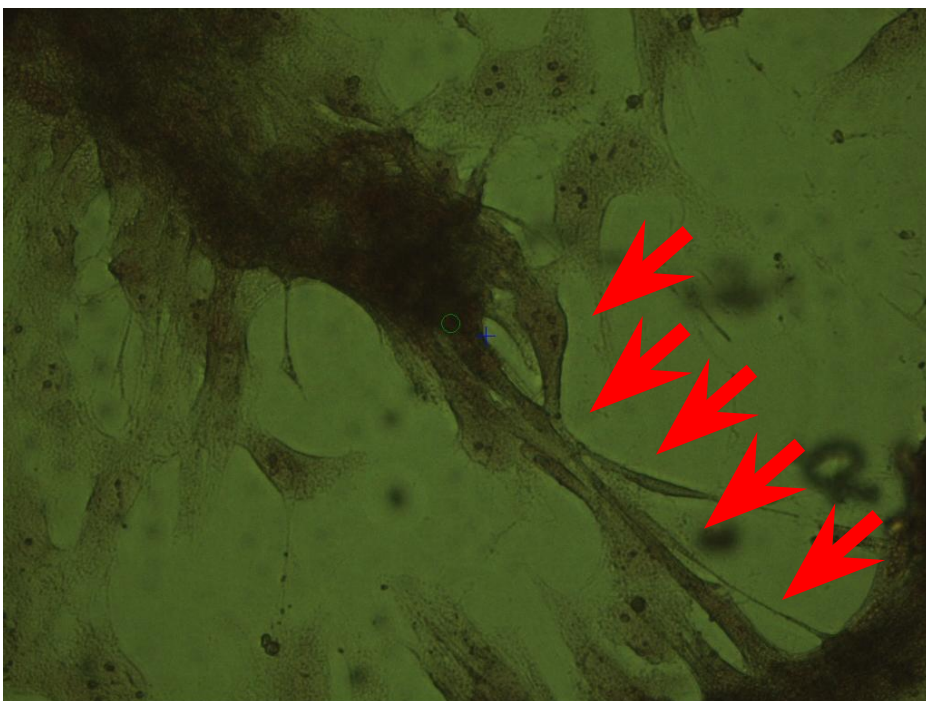
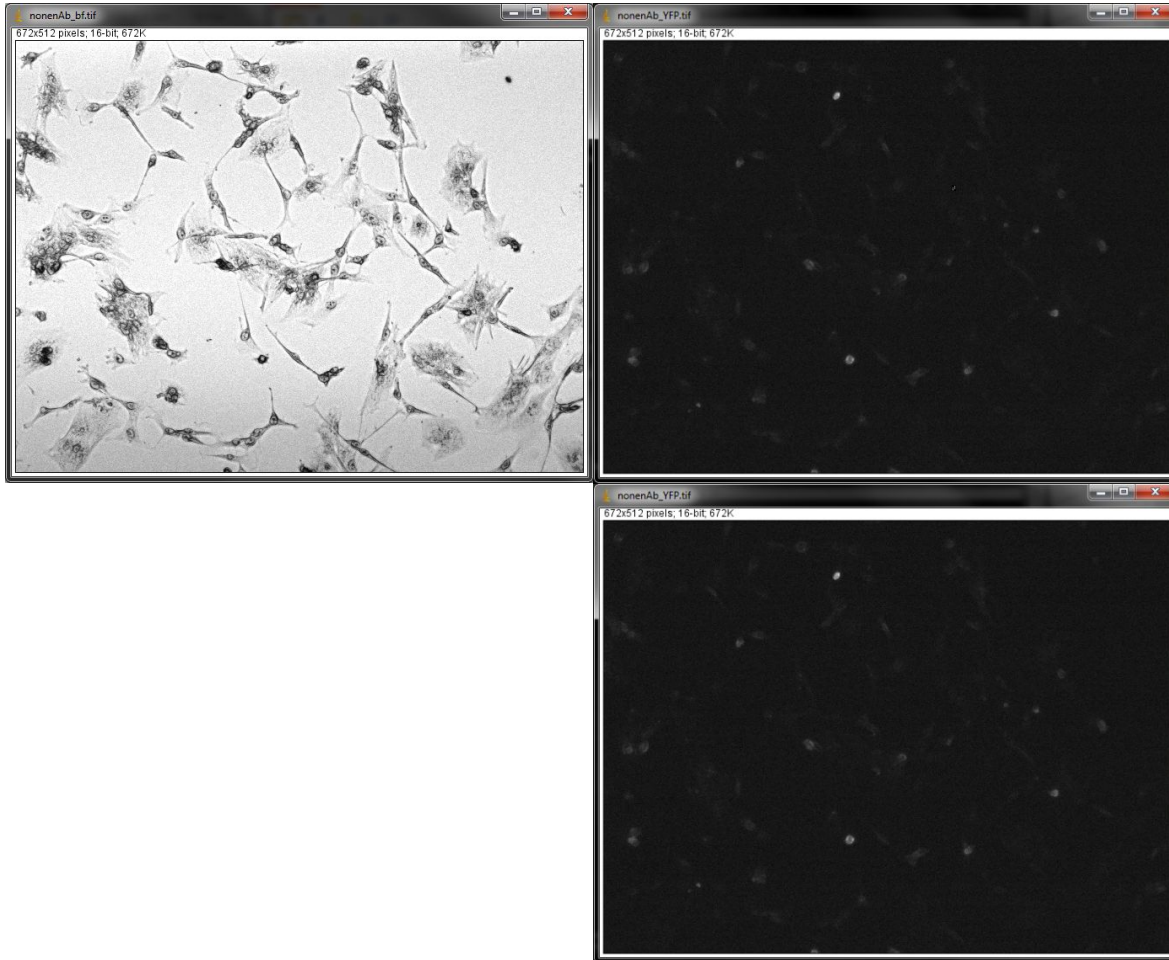


Cardiac-specific LCM

# 1) Successful LCM on cardiac cells



# Untransfected, noIF



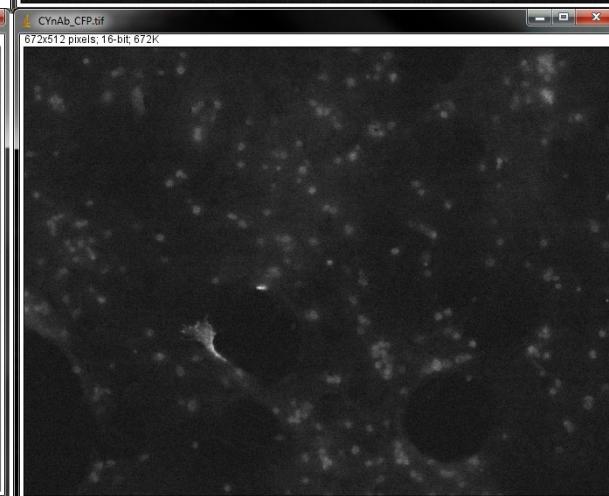
Weak punctate  
signal from  
“condensed”  
cells

Background  
autofluorescence  
is very low

# CFP-linker-YFP, nolF



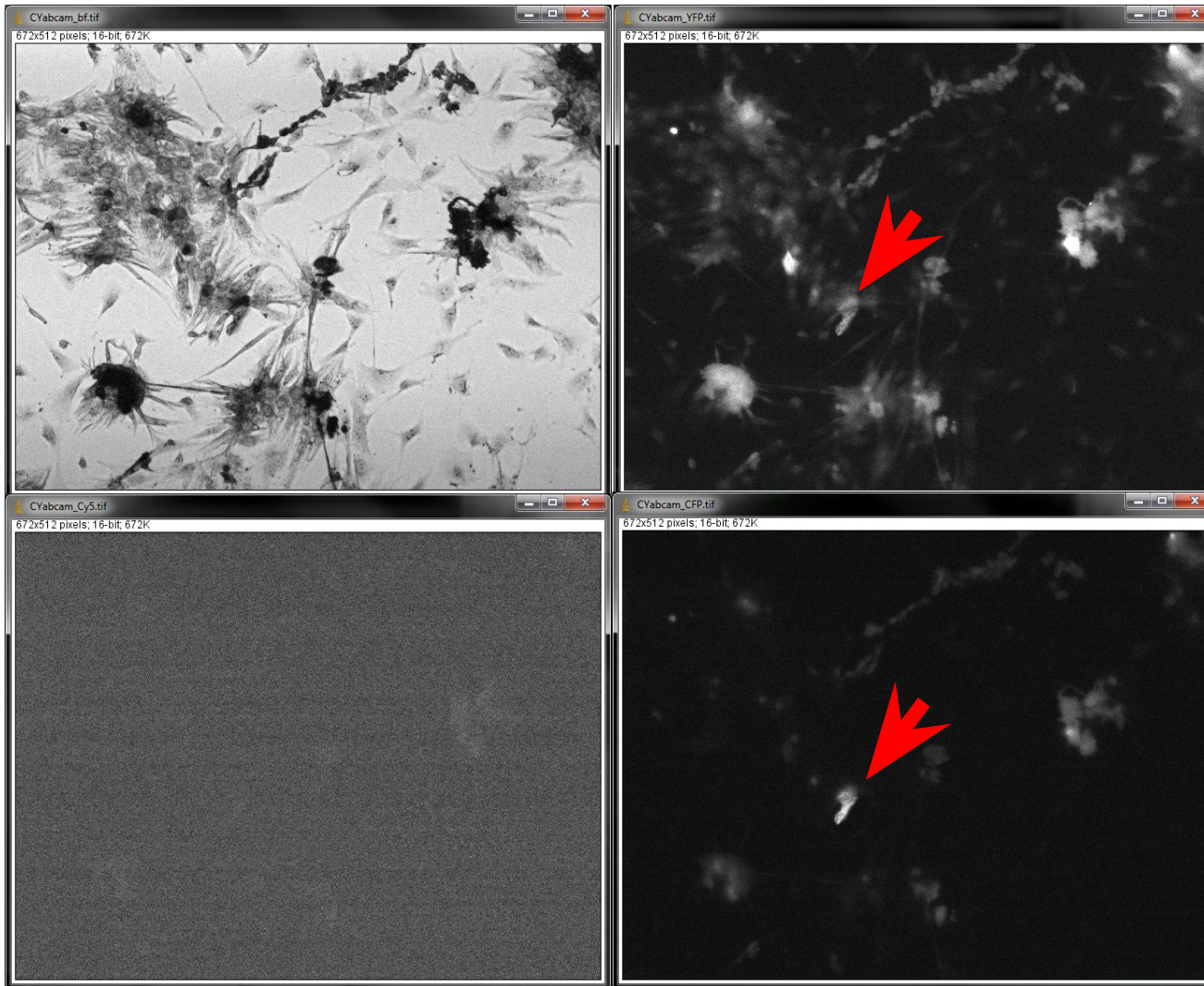
Weak punctate  
signal from  
“condensed”  
cells



Background  
autofluorescence  
in Cy5.5 channel  
is very low



# CFP-linker-YFP, abcam



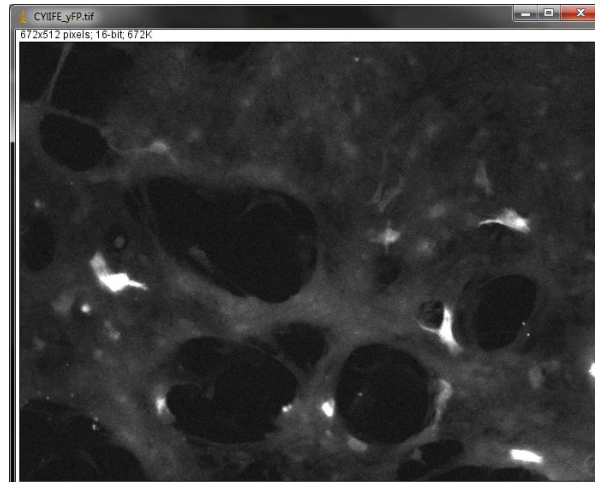
CFP channel shows transfected cell

Low autofluorescence in Cy5.5 channel

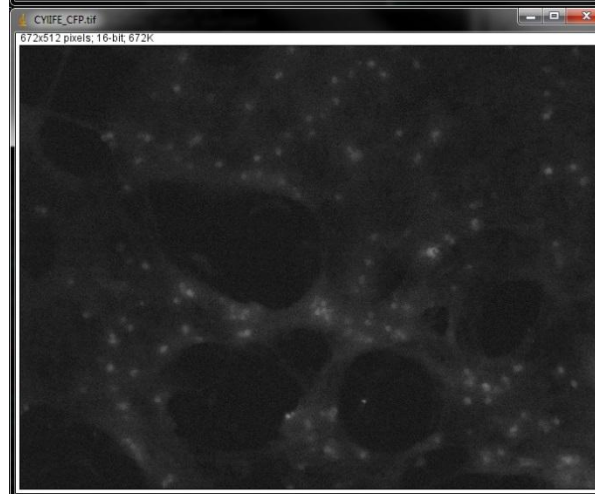
YFP channel shows nonspecific signal

This is where the story breaks down...

# CFP-linker-YFP, life technologies



YFP/488 signal for isolated cells... but no corresponding CFP signal



If autofluorescence, would be uniform  
If specific, should also see CFP+

# Part 1

- 2<sup>nd</sup> attempt at LCM with fluorescent cells – didn't come off...
  - Fluorescence ☐ fixation/dehydration ☐ capture
- Questionable Ab results

# Part 2: GFP/mCherry

